

NSWIC

Changing climate discussion

Matthew Coulton

General Manager Water and Agriculture Program

water@bom.gov.au



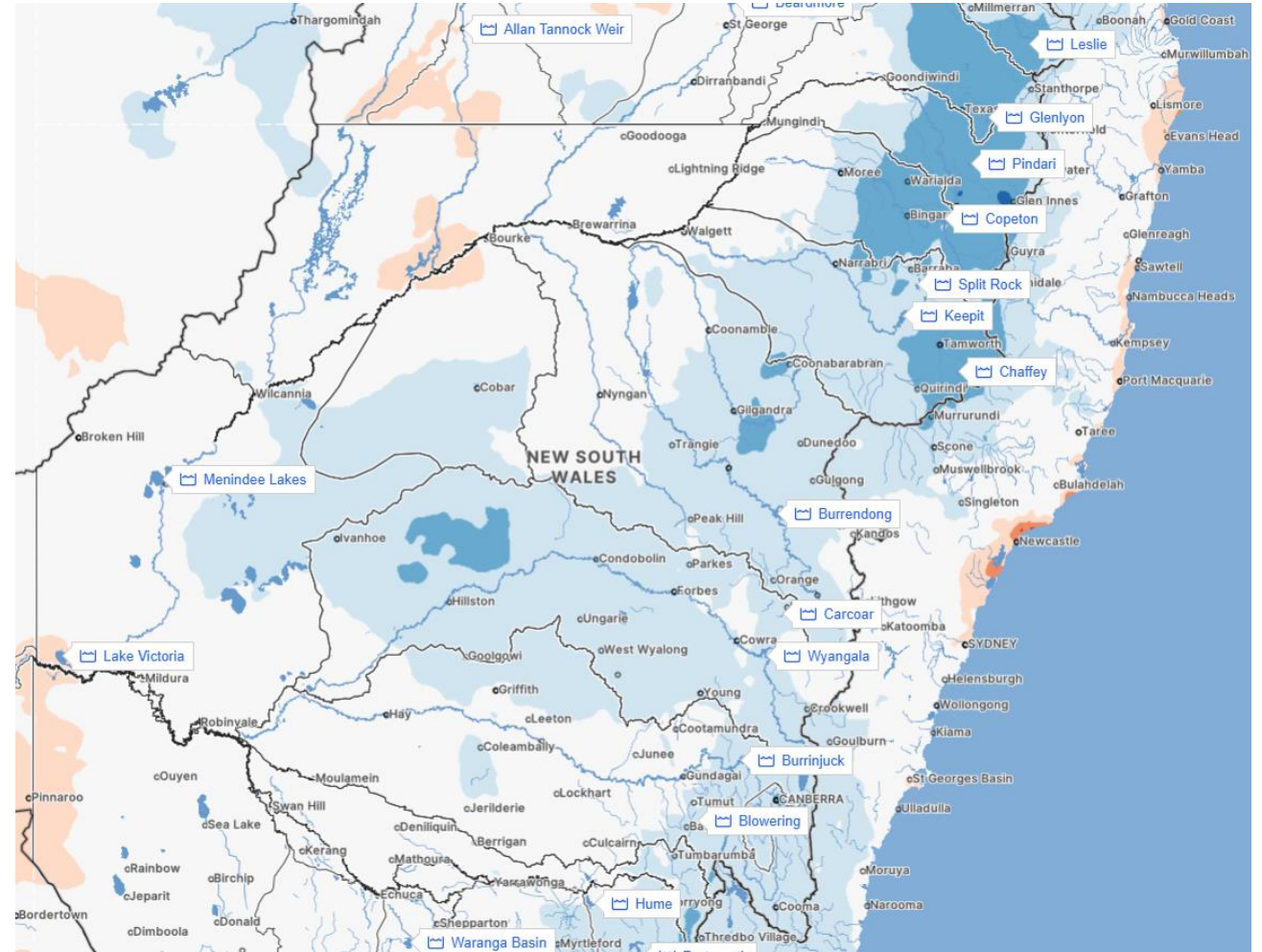
Australian Government
Bureau of Meteorology

20 July 2021

Contents

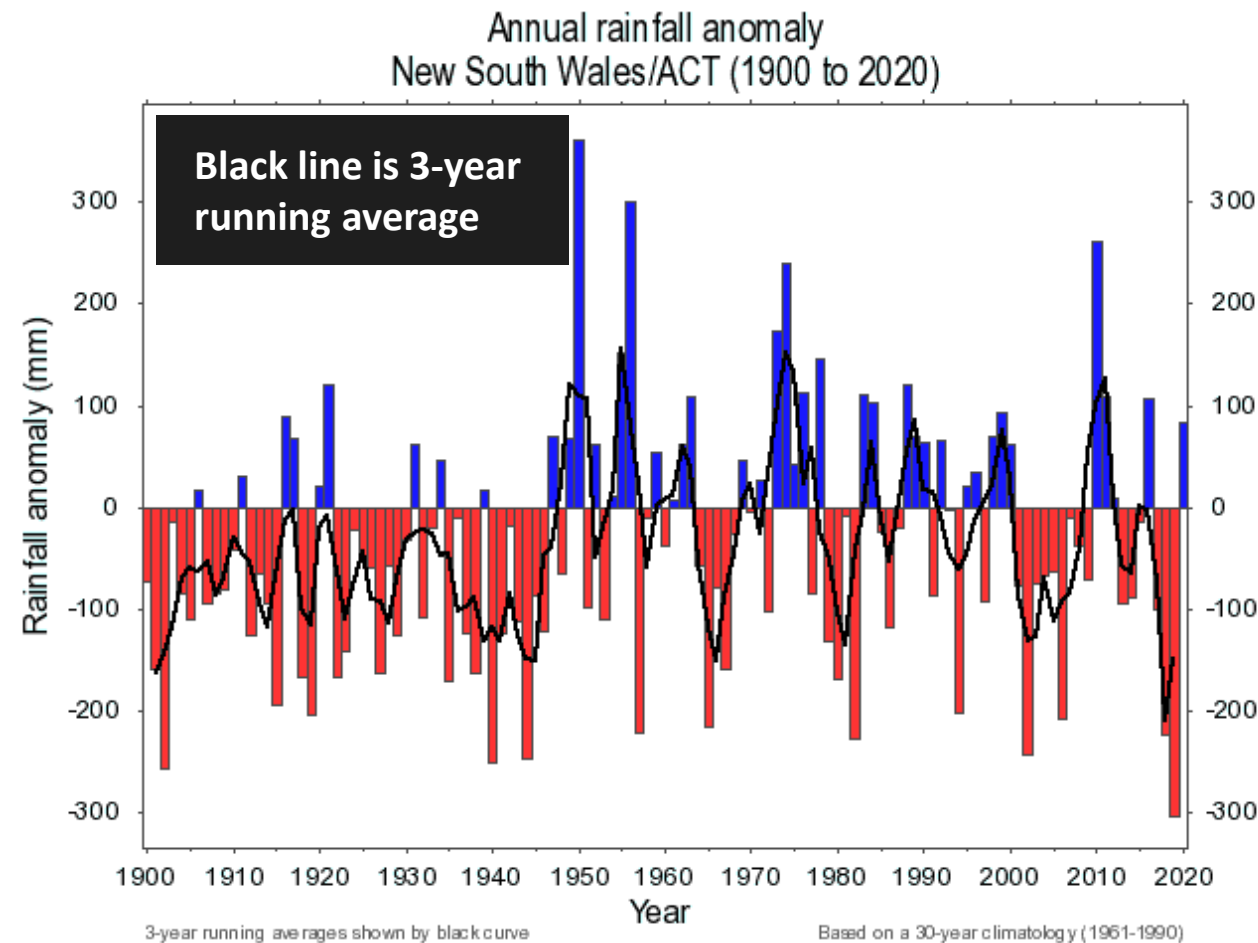
- High level overview of rainfall and temperature in NSW
- Climate impacts on water availability in the last 20 years
- Plug for Climate Services for Agriculture
- Plug for Murray-Darling Basin Water Information Portal

*Screenshot from new Murray-Darling Basin
Water Information Portal ->
MDBWIP.bom.gov.au*



Rainfall in NSW

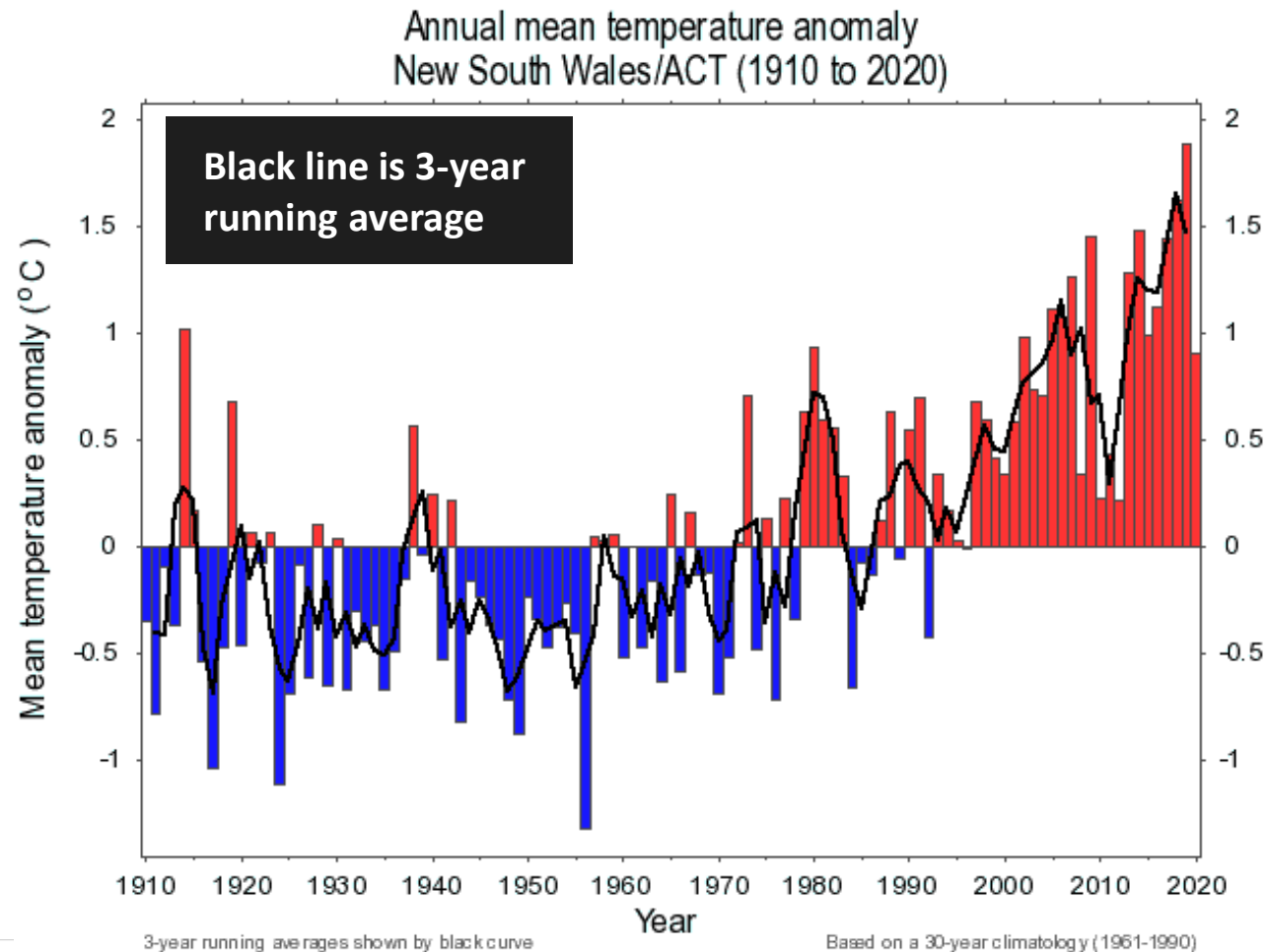
Rainfall in NSW – high level view



Average annual rainfall each decade

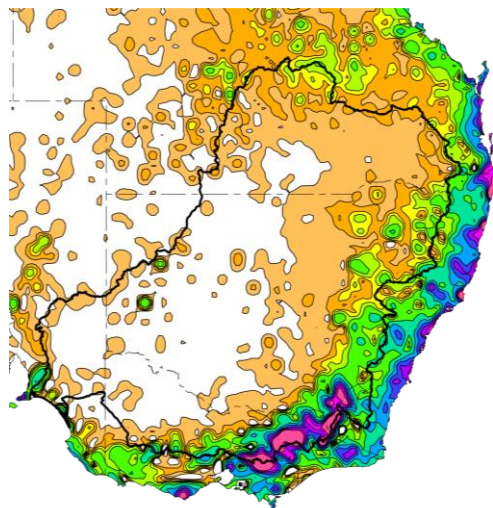
1901-1910	465.269
1911-1920	492.279
1921-1930	486.511
1931-1940	484.214
1941-1950	528.341
1951-1960	566.489
1961-1970	524.151
1971-1980	581.264
1981-1990	563.182
1991-2000	552.68
2001-2010	497.334
2011-2020	504.453

Mean temperature and evapotranspiration in NSW – high level view

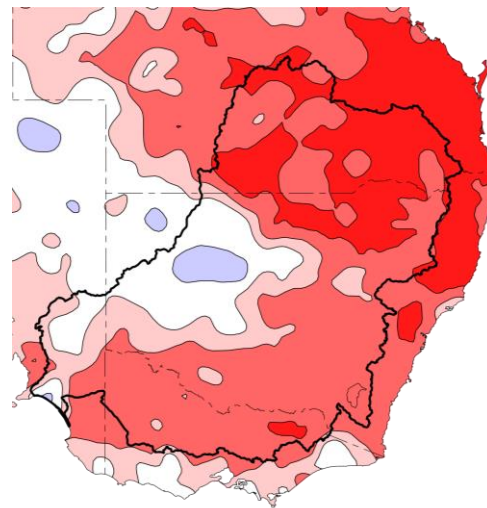


Last 20 years in the Basin – climate impacts on water availability

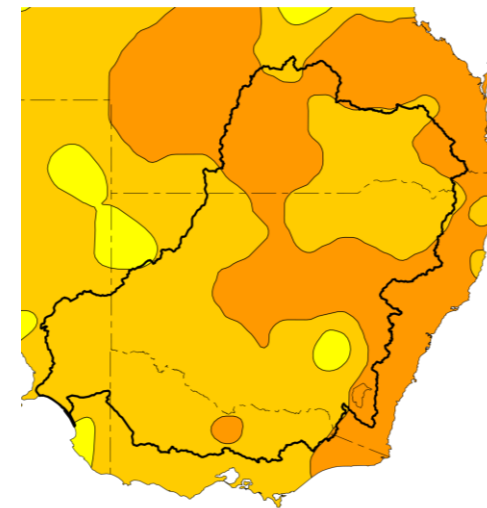
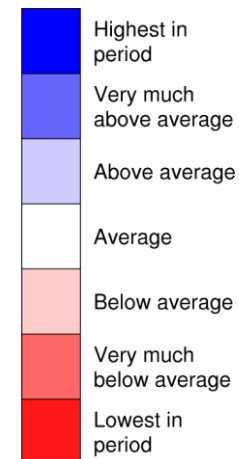
Last 20 years in the Basin – Cool season (April to September)



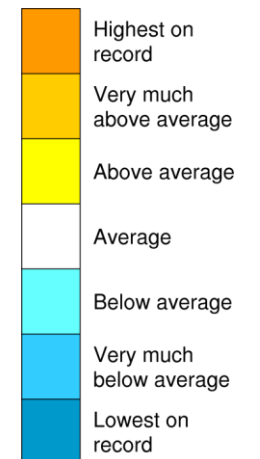
**Long-term average modelled
runoff 1911-2020**
(where water comes from)



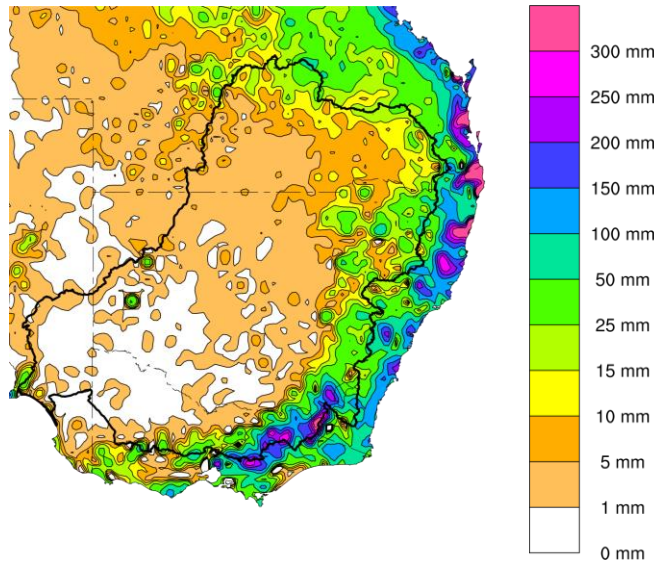
**Rainfall percentiles for last
20 years**
Compared to 1900-2020



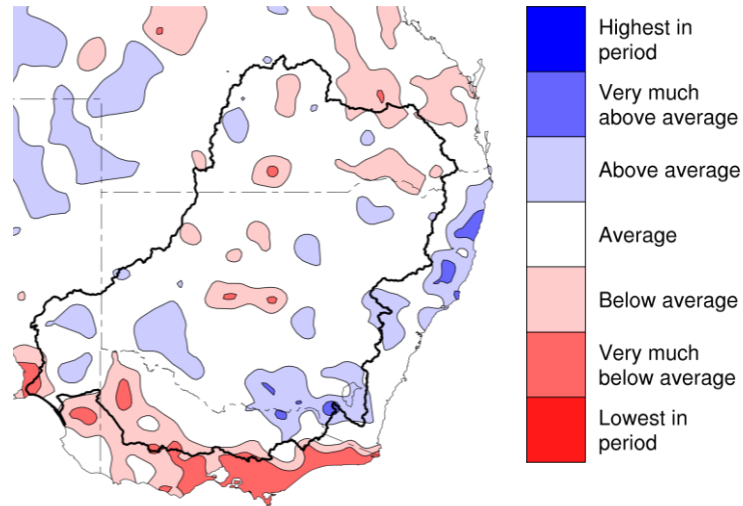
**Mean temperate percentiles
for last 20 years**
Compared to 1900-2020



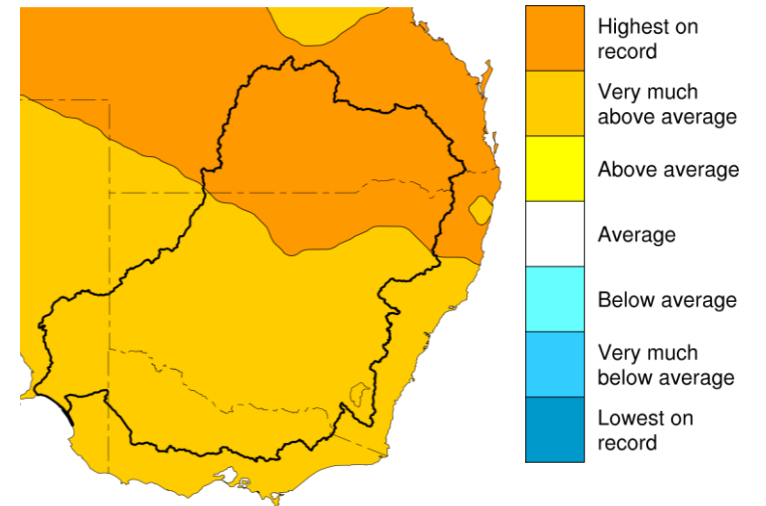
Last 20 years in the Basin – Warm season (October to March)



**Long-term average modelled
runoff 1911-2020**
(where water comes from)

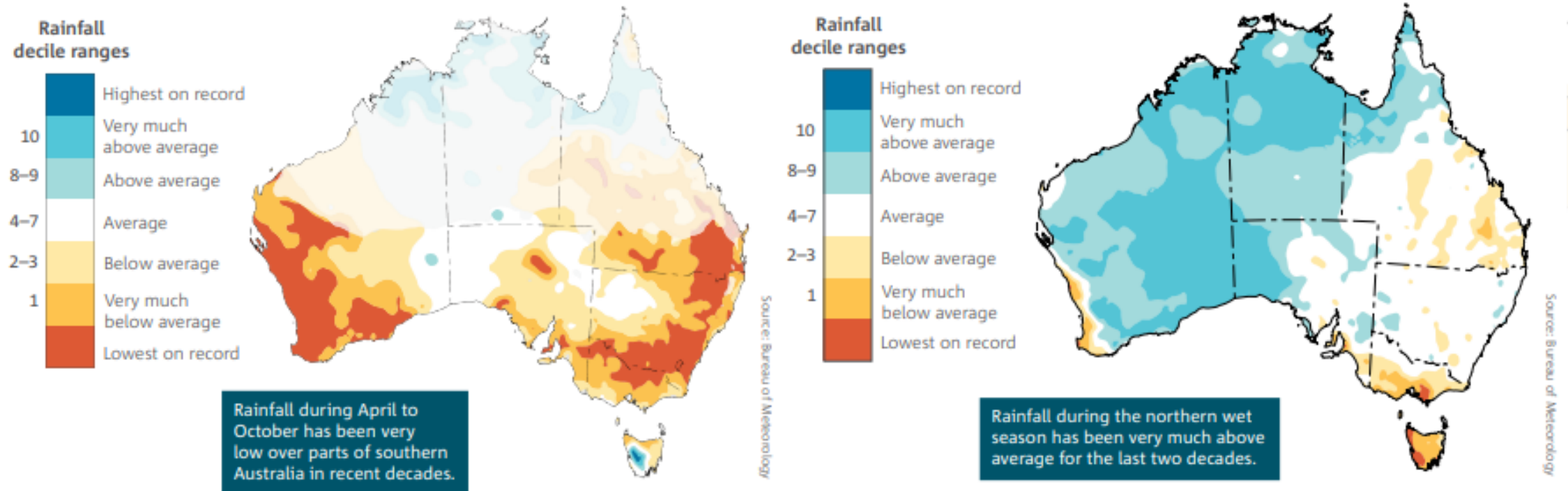


**Rainfall percentiles for last
20 years**
Compared to 1900-2020



**Mean temperature percentiles
for last 20 years**
Compared to 1900-2020

How these trends fit with national trends



Understanding climate change at the local scale

Climate Services for Agriculture project – prototype

<https://climateservicesforag.indraweb.io/dashboard>

Username: csa
Password: demo

[Live demo and discussion]

Request for feedback on MDB Water Information Portal

MDBWIP.bom.gov.au

- New central source of information for the Murray-Darling Basin
- Basic version one out now, so people can test and tell us what they want included in future version.
- Please provide feedback through to water@bom.gov.au
- Please let us know if you'd be willing to sit down with one of our designers and participate in user-centred design.

Select a Basin catchment

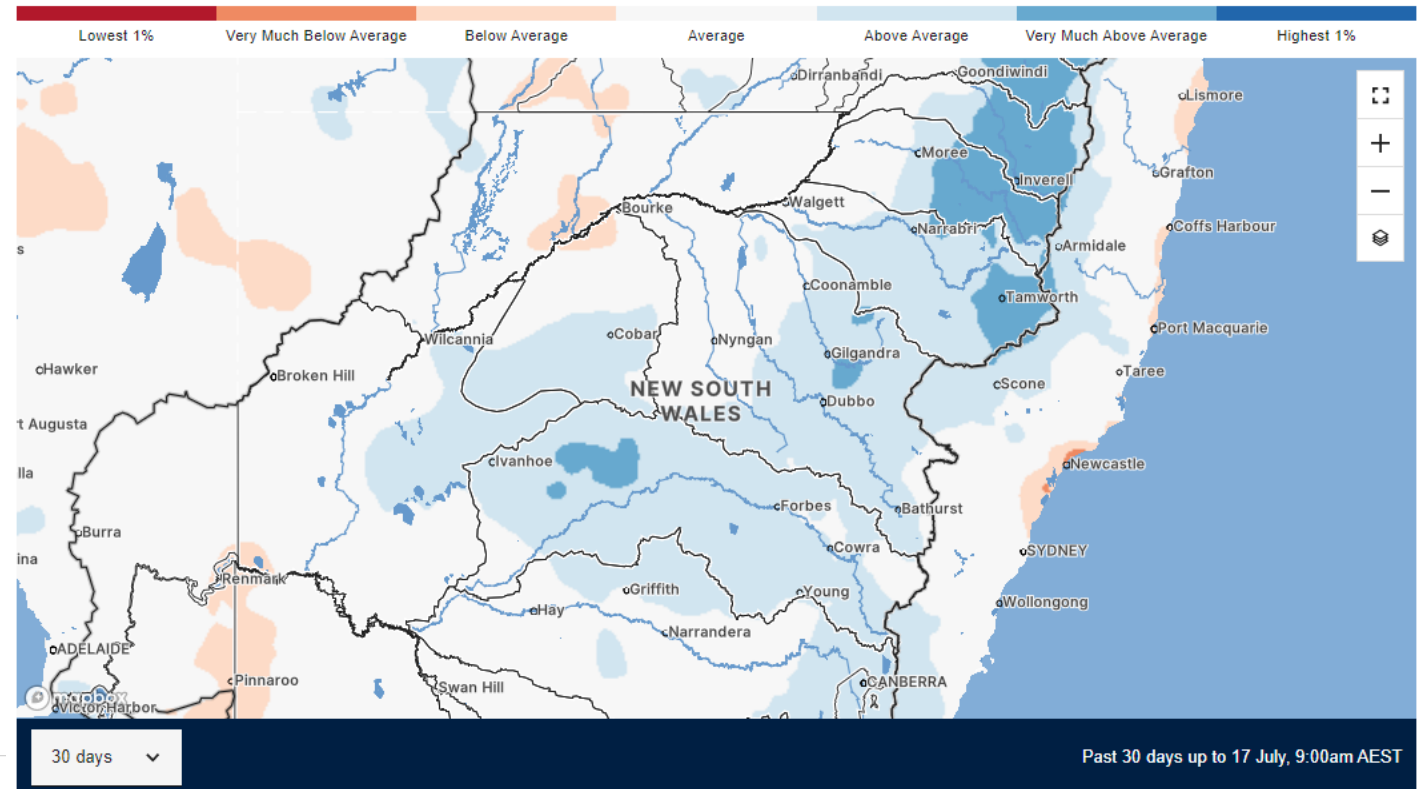
Select an option

Storages

Rainfall

More weather and water...

Root zone soil moisture percentiles - [change](#)



NWSIC – CHANGING CLIMATE WORKSHOP

Thank you

Matthew Coulton

General Manager Water Sector Program

water@bom.gov.au



Australian Government
Bureau of Meteorology